



2018 CATALOG





For 75 years, Speer® has been tirelessly serving shooters. Today we offer the world's finest component bullets and loaded ammunition, including Gold Dot, the No. 1 choice of law enforcement. The original product lines have been expanded and new ones added. But through the changes, our formula for success has been constant. Quality. Precision. Consistency. No matter what type of shooting you do, you will find a perfect option with Speer.

## AMMUNITION

Gold Dot® Personal Protection .....	4-5
Lawman® Training .....	6-7

## COMPONENT BULLETS

### RIFLE

Hunting .....	8-9
Varmint .....	10-11
Target & Plinking .....	12-13

### HANDGUN

Hunting & Personal Protection .....	14-15
Target & Action .....	16-17

SPECIALTY & ACCESSORIES .....	18-19
-------------------------------	-------

# GOLD DOT®

PERSONAL PROTECTION

## TESTED. PROVEN. TRUSTED.

Gold Dot® ammunition's reliability has made it the No. 1 load for law enforcement, and we offer the same performance to you. Using our exclusive Uni-Cor® method, we bond the jacket to the core one molecule at a time at the very beginning of the bullet construction process. This virtually eliminates core-jacket separation and creates a precision hollow point that is accurate, tough and unbelievably consistent. With options for both standard handguns and short barrels, there's a Gold Dot load to fit any shooter. Now available in 10mm Auto.

### CONSTRUCTION

1



The Speer® Gold Dot bullet begins with an alloyed lead core.

2



Gold Dot technology bonds an incredibly uniform jacket to the core—one molecule at a time.

3

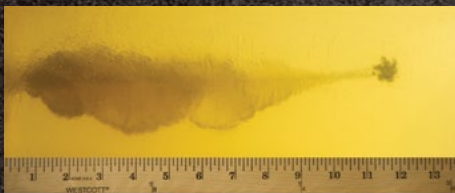


First stage of patented two-stage hollow point process creates memory lines that expansion can follow.

4



Second forming stage finishes the cavity to match bullet weight and velocity, producing a smooth leading edge for reliable feeding, and a uniform heel for superb accuracy.



Gold Dot has been proven to provide optimum penetration and expansion through ballistic gelatin and all barriers used in FBI protocol testing. Tests conducted with 9mm Luger 124-grain +P Gold Dot (23617).



FBI Protocol Tests						
Test Event	Bare Gelatin	Heavy Clothing	Plywood	Steel	Wallboard	Auto Glass
Velocity	1226 fps	1226 fps	1226 fps	1226 fps	1226 fps	1226 fps
Penetration	12"	14.5"	14"	18.5"	12.5"	13.5"
Expansion	.759" Dia.	.569" Dia.	.577" Dia.	.438" Dia.	.693" Dia.	.518" Dia.
Retained Weight	100%	100%	100%	100%	100%	83.5%

## GOLD DOT SHORT BARREL® PERSONAL PROTECTION

### FULL-SIZE DEFENSE FROM COMPACT PISTOLS



At one time, packing a compact handgun meant sacrificing performance. Gold Dot Short Barrel has changed that. It works in barrels as short as 1.9 inches and has been proven by both law enforcement and private citizens. The loads produce less felt recoil while achieving reliable expansion at a variety of distances and velocities.



**SPEER® GOLD DOT® HANDGUN PERSONAL PROTECTION**

Caliber	Part #	Bullet		Test Barrel Length (in)	Muzzle	Velocity, fps			Energy, ft-lbs			Trajectory (25 yd sight-in), inches*			
		Wt. (grs)	Type			50 yds	100 yds	Muzzle	50 yds	100 yds	25 yds	50 yds	75 yds	100 yds	
<b>25 Auto*</b>	23602	35	GDHP	2	900	830	770	63	54	46	⊕	-2.0	-7.2	-15.7	
<b>32 Auto*</b>	23604	60	GDHP	4	960	894	840	123	107	94	⊕	-1.6	-6.0	-13.2	
<b>327 Federal Magnum*</b>	23913	100	GDHP	4	1600	1324	1181	500	389	310	⊕	-0.2	-1.6	-4.5	
<b>380 Auto*</b>	23606	90	GDHP	3.75	1040	907	842	196	164	142	⊕	-1.5	-5.7	-12.7	
<b>9mm Luger*</b>	23614	115	GDHP	4	1210	1071	981	374	293	246	⊕	-0.8	-3.5	-8.2	
	23618	124	GDHP	4	1150	1039	963	364	297	255	⊕	-0.9	-3.9	-9.0	
	23619	147	GDHP	4	985	932	887	317	284	257	⊕	-1.5	-5.5	-12.0	
<b>9mm Luger +P*</b>	23617	124	GDHP	4	1220	1085	996	410	324	273	⊕	-0.8	-3.3	-8.0	
<b>357 SIG*</b>	23918	125	GDHP	4	1350	1184	1066	506	389	316	⊕	-0.5	-2.5	-6.2	
<b>357 Magnum*</b>	23920	125	GDHP	4-V	1450	1261	1118	584	441	347	⊕	-0.3	-2.0	-5.2	
	23960	158	GDHP	4-V	1235	1119	1036	535	440	377	⊕	-0.7	-3.1	-7.4	
<b>40 S&amp;W*</b>	23970	165	GDHP	4	1150	1042	967	484	398	342	⊕	-0.9	-3.9	-8.9	
	23962	180	GDHP	4	1025	956	902	420	365	325	⊕	-1.3	-5.0	-11.2	
<b>10mm Auto* NEW</b>	54000	200	GDHP	5	1100	1030	976	537	471	423	⊕	-1.3	-4.7	-10.2	
<b>44 Special*</b>	23980	200	GDHP	6	875	832	794	340	308	280	⊕	-2.1	-7.3	-15.8	
<b>45 Auto*</b>	23964	185	GDHP	5	1050	955	886	453	375	322	⊕	-1.3	-4.9	-11.1	
	23966	230	GDHP	5	890	845	805	404	365	331	⊕	-2.0	-7.1	-15.3	
<b>45 Colt*</b>	23984	250	GDHP	7.26	750	800	694	312	289	268	⊕	-3.1	-10.4	-21.9	

\* Available 50 count

**SPEER® GOLD DOT® SHORT BARREL® PERSONAL PROTECTION**

Caliber	Part #	Bullet		Test Barrel Length (in)	Muzzle	Velocity, fps			Energy, ft-lbs			Trajectory (25 yd sight-in), inches*			
		Wt. (grs)	Type			50 yds	100 yds	Muzzle	50 yds	100 yds	25 yds	50 yds	75 yds	100 yds	
<b>22 Win. Mag.</b>	954	40	GDHP-SB	1.9	1050	966	898	99	83	72	⊕	-1.2	-4.8	-10.9	
<b>9mm Luger +P</b>	23611	124	GDHP-SB	3.5	1150	1039	963	364	297	255	⊕	-0.9	-3.9	-9.0	
<b>38 Special +P</b>	23921	135	GDHP-SB	2-V	860	818	780	222	200	182	⊕	-2.2	-7.6	-16.4	
<b>357 Magnum</b>	23917	135	GDHP-SB	2-V	990	928	877	294	258	231	⊕	-1.5	-5.5	-12.1	
<b>40 S&amp;W</b>	23974	180	GDHP-SB	3.5	950	898	854	361	322	291	⊕	-1.7	-6.0	-13.2	
<b>45 Auto</b>	23975	230	GDHP-SB	4	820	783	749	343	313	287	⊕	-2.5	-8.5	-18.3	

\*Handgun Trajectory: bullet path relative to line-of-sight when sighted for 25 yards (sight height 0.9 inches). Test barrels are used to determine ballistic figures. Individual firearms may vary. These figures are approximate and are shown for reference. V = Vented test barrel simulating revolver performance. These trajectory tables were calculated by computer using the best available data for each load. Trajectories are representative of the nominal behavior of each load at standard conditions (59°F temperature; barometric pressure of 29.53 inches; altitude at sea level). Shooters are cautioned that actual trajectories may differ due to variations in altitude, atmospheric conditions, guns, sights and ammunition. GD = Gold Dot®, HP = Hollow Point, SB = Short Barrel®

**NEW**

**POWER-PACKED 10MM AUTO**

The Gold Dot line is now even stronger with the addition of a powerful 10mm Auto load that takes advantage of the cartridge's capability. While most 10mm Auto offerings produce ballistics similar to those of 40 S&W, Gold Dot's 200-grain bullet is loaded for optimal performance from the cartridge.



## TAKE TRAINING TO THE NEXT LEVEL

If you practice with ammunition that doesn't match the ballistics of your carry loads, you're not training—you're just shooting. That's why we build Speer® Lawman®. It's extremely reliable, with feel and point of aim that's as close as possible to comparable defense loads. All options feature reloadable brass and a Speer TMJ® bullet with a jacket that encapsulates the entire lead core for clean, consistent performance.

### LAWMAN CLEAN-FIRE® TRAINING

#### CLEAR THE AIR



Lawman Clean-Fire ammunition gives shooters ideal indoor options. These offerings use the patented Clean-Fire primer, which contains no lead, barium or antimony. And the bullet is Speer's TMJ. This means the lead core is completely encased so powder gases can't burn lead off the bullet base. Range air, and your firearm, will be much cleaner when you shoot these special loads.

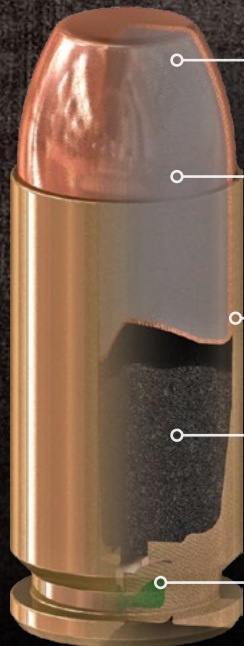
#### THE VISIBLE DIFFERENCE



Lawman Clean-Fire spent cases look almost unfired when compared to traditionally primed ammunition. The heavy metals have been removed, producing a clean burn.



Lawman, 45 Auto 230-grain,  
5 shots handheld at 50 feet,  
1.125-inch group



— Speer TMJ bullet with one-piece jacket

— The lead core is completely and seamlessly encased in jacket material, so powder gases can't burn lead off the bullet base

— Reloadable brass cases manufactured to tight tolerances

— Clean-burning propellants deliver optimum velocity while ensuring consistent chamber pressures

— CCI® primers for highly sensitive and reliable ignition


**SPEER® LAWMAN® TRAINING**

Caliber	Part #	Bullet		Test Barrel Length (in)	Muzzle	Velocity, fps			Energy, ft-lbs			Trajectory (25 yd sight-in), inches*			
		Wt. (grs)	Type			50 yds	100 yds	Muzzle	50 yds	100 yds	25 yds	50 yds	75 yds	100 yds	
<b>380 Auto</b>	53608	95	TMJ RN	3.75	950	892	843	190	168	150	⊕	-1.7	-6.0	-13.4	
	53650	115	TMJ RN	4	1200	1098	1024	368	308	268	⊕	-0.8	-3.3	-7.8	
<b>9mm Luger</b>	53651	124	TMJ RN	4	1090	1011	951	327	281	249	⊕	-1.1	-4.3	-9.7	
	53620	147	TMJ FN	4	985	932	888	317	284	257	⊕	-1.5	-5.5	-12.0	
<b>38 Special +P</b>	53750	158	TMJ FN	4-V	900	861	826	284	260	240	⊕	-1.9	-6.8	-14.7	
<b>357 SIG</b>	53919	125	TMJ FN	4	1325	1171	1061	487	380	313	⊕	-0.5	-2.6	-6.5	
	53957	155	TMJ FN	4	1175	1049	965	475	378	320	⊕	-0.9	-3.7	-8.7	
<b>40 S&amp;W</b>	53955	165	TMJ FN	4	1150	1040	964	484	396	340	⊕	-0.9	-3.9	-9.0	
	53652	180	TMJ FN	4	1000	937	885	400	351	313	⊕	-1.4	-5.3	-11.8	
<b>45 G.A.P.</b>	53979	185	TMJ FN	5	1060	950	872	462	370	312	⊕	-1.3	-5.0	-11.2	
	53980	200	TMJ FN	5	990	908	843	435	366	316	⊕	-1.5	-5.7	-12.7	
<b>45 Auto</b>	53654	185	TMJ FN	5	1050	943	867	453	365	308	⊕	-1.3	-5.1	-11.5	
	53653	230	TMJ FN	5	830	794	760	352	322	295	⊕	-2.4	-8.2	-17.7	

**SPEER® LAWMAN® CLEAN-FIRE® TRAINING**

Caliber	Part #	Bullet		Test Barrel Length (in)	Muzzle	Velocity, fps			Energy, ft-lbs			Trajectory (25 yd sight-in), inches*			
		Wt. (grs)	Type			50 yds	100 yds	Muzzle	50 yds	100 yds	25 yds	50 yds	75 yds	100 yds	
<b>9mm Luger</b>	53824	124	TMJ RN	4	1090	1019	965	327	286	256	⊕	-1.1	-4.2	-9.6	
	53826	147	TMJ FN	4	985	932	888	317	284	257	⊕	-1.5	-5.5	-12	
<b>38 Special +P</b>	53833	158	TMJ FN	4-V	900	861	826	284	260	240	⊕	-1.9	-6.8	-14.7	
<b>357 SIG</b>	54232	125	TMJ FN	4	1350	1190	1074	506	393	320	⊕	-0.5	-2.5	-6.2	
<b>40 S&amp;W</b>	53880	180	TMJ FN	4	975	937	885	400	351	313	⊕	-1.4	-5.3	-11.8	
<b>45 Auto</b>	53885	230	TMJ RN	5	845	807	773	365	333	305	⊕	-2.3	-7.9	-16.9	

\*Handgun Trajectory: bullet path relative to line-of-sight when sighted for 25 yards (sight height 0.9 inches). Test barrels are used to determine ballistic figures. Individual firearms may vary. These figures are approximate and are shown for reference. V = Vented test barrel simulating revolver performance. FN = Flat Nose, TMJ = Total Metal Jacket, RN = Round Nose

# BIG GAME & SELF-DEFENSE RIFLE BULLETS

When you plan the hunt of a lifetime, load Speer® big game rifle bullets. When you plan for the worst, choose our new Gold Dot® rifle bullets. All have been proven by decades of service in the field. Trust them when the moment of truth comes.

## GRAND SLAM™

### *SUPERIOR PERFORMANCE, EXCEPTIONAL ACCURACY*



With a tapered, precision-drawn jacket and a long nose, the Grand Slam bullet is engineered to blow through the thick hides, heavy bones and tough bodies of the world's biggest game—without sacrificing accuracy. On impact, internal jacket flutes allow consistent expansion, yet the bullet retains most of its weight for deep penetration every time.

## HOT-COR™

### *CONSISTENT AND ACCURATE*



Get incredibly reliable all-range accuracy and terminal performance with Speer Hot-Cor bullets. Molten lead is poured into the jacket during the construction process to maximize consistency while minimizing cost to the shooter.

## BOAT-TAIL

### *BUILT FOR LONG RANGE*



Extend your range on medium game with Speer Boat-Tail bullets. Designed for the long-range shooter, these bullets' tapered heel flattens trajectories and decreases wind drift. On impact, they expand rapidly for quick, clean kills.

## GOLD DOT PERSONAL PROTECTION

### *DEMONSTRATED SELF-DEFENSE*



Speer offers duty-proven performance in a new line of Gold Dot Personal Protection rifle bullets. Their exclusive manufacturing process bonds the uniform jacket to the core one atom at a time, ensuring proper expansion, nearly 100 percent weight retention and immediate, threat-stopping performance.

**GRAND SLAM® RIFLE BULLETS**

Caliber	Part No.	Diameter	Weight	Bullet Type	BC	SD	Box Count
<b>270 Caliber</b>	1465	0.277	130	GSSP	0.332	0.242	50
<b>270 Caliber</b>	1608	0.277	150	GSSP	0.378	0.279	50
<b>7mm</b>	1632	0.284	145	GSSP	0.353	0.257	50
<b>7mm</b>	1638	0.284	160	GSSP	0.389	0.283	50
<b>7mm</b>	1643	0.284	175	GSSP	0.436	0.310	50
<b>30 Caliber</b>	2026	0.308	150	GSSP	0.295	0.226	50
<b>30 Caliber</b>	2038	0.308	165	GSSP	0.354	0.248	50
<b>30 Caliber</b>	2063	0.308	180	GSSP	0.374	0.271	50
<b>338 Caliber</b>	2408	0.338	250	GSSP	0.436	0.313	50
<b>243 Caliber</b>	1222	0.243	100	GSSP	0.327	0.242	50
<b>25 Caliber</b>	1415	0.257	120	GSSP	0.356	0.260	50
<b>6.5mm</b>	1444	0.264	140	GSSP	0.498	0.287	50

**HOT-COR® RIFLE BULLETS**

Caliber	Part No.	Diameter	Weight	Bullet Type	BC	SD	Box Count
<b>6mm</b>	1217	0.243	90	Spitzer SP	0.365	0.218	100
<b>25 Caliber</b>	1241	0.257	87	Spitzer SP	0.300	0.188	100
<b>25 Caliber</b>	1405	0.257	100	Spitzer SP	0.334	0.216	100
<b>6.5mm</b>	1441	0.264	140	Spitzer SP	0.498	0.287	100
<b>270 Caliber</b>	1459	0.277	130	Spitzer SP	0.383	0.242	100
<b>270 Caliber</b>	1605	0.277	150	Spitzer SP	0.455	0.279	100
<b>7mm</b>	1623	0.284	130	Spitzer SP	0.368	0.230	100
<b>7mm</b>	1629	0.284	145	Spitzer SP	0.416	0.257	100
<b>7mm</b>	1635	0.284	160	Spitzer SP	0.504	0.283	100
<b>30 Caliber</b>	2007	0.308	130	SPFN	0.213	0.196	100
<b>30 Caliber</b>	2011	0.308	150	SPFN	0.255	0.226	100
<b>30 Caliber</b>	2023	0.308	150	Spitzer SP	0.377	0.226	100
<b>30 Caliber</b>	2035	0.308	165	Spitzer SP	0.444	0.248	100
<b>30 Caliber</b>	2041	0.308	170	SPFN	0.298	0.256	100
<b>30 Caliber</b>	2053	0.308	180	Spitzer SP	0.441	0.271	100
<b>30 Caliber</b>	2211	0.308	200	Spitzer SP	0.478	0.301	50
<b>303 Caliber</b>	2217	0.311	150	Spitzer SP	0.351	0.222	100
<b>303 Caliber</b>	2223	0.311	180	SPRN	0.299	0.266	100
<b>32 Caliber</b>	2259	0.321	170	SPFN	0.283	0.236	100
<b>8mm</b>	2277	0.323	150	Spitzer SP	0.343	0.205	100
<b>8mm</b>	2283	0.323	170	Semi-Spitzer SP	0.311	0.233	100
<b>8mm</b>	2285	0.323	200	Spitzer SP	0.440	0.274	50
<b>338 Caliber</b>	2405	0.338	200	Spitzer SP	0.426	0.250	50
<b>358 Caliber</b>	2435	0.358	180	SPFN	0.236	0.201	100
<b>358 Caliber</b>	2439	0.358	220	SPFN	0.286	0.245	50
<b>358 Caliber</b>	2453	0.358	250	Spitzer SP	0.422	0.279	50
<b>9.3mm</b>	2459	0.366	270	Semi-Spitzer SP	0.361	0.288	50
<b>375 Caliber</b>	2471	0.375	235	Semi-Spitzer SP	0.301	0.239	50
<b>416 Caliber</b>	2477	0.416	350	Mag-Tip	0.332	0.289	50
<b>45 Caliber</b>	2478	0.458	350	SPFN	0.218	0.238	50

**BOAT-TAIL RIFLE BULLETS**

Caliber	Part No.	Diameter	Weight	Bullet Type	BC	SD	Box Count
<b>6mm</b>	1213	0.243	85	BTSP	0.380	0.206	100
<b>6mm</b>	1220	0.243	100	BTSP	0.446	0.242	100
<b>25 Caliber</b>	1408	0.257	100	BTSP	0.393	0.216	100
<b>25 Caliber</b>	1410	0.257	120	BTSP	0.480	0.260	100
<b>270 Caliber</b>	1458	0.277	130	BTSP	0.412	0.242	100
<b>270 Caliber</b>	1604	0.277	150	BTSP	0.489	0.279	100
<b>7mm</b>	1624	0.284	130	BTSP	0.424	0.230	100
<b>7mm</b>	1628	0.284	145	BTSP	0.472	0.257	100
<b>7mm</b>	1634	0.284	160	BTSP	0.519	0.283	100
<b>30 Caliber</b>	2022	0.308	150	BTSP	0.417	0.226	100
<b>30 Caliber</b>	2034	0.308	165	BTSP	0.520	0.248	100
<b>30 Caliber</b>	2052	0.308	180	BTSP	0.545	0.271	100
<b>338 Caliber</b>	2406	0.338	225	BTSP	0.497	0.281	50
<b>375 Caliber</b>	2472	0.375	270	BTSP	0.478	0.274	50

**GOLD DOT® RIFLE BULLETS**

Caliber	Part No.	Diameter	Weight	Bullet Type	BC	SD	Box Count
<b>224 Caliber</b>	22455GDB	0.224	55	BTSP	0.25	0.148	100
<b>224 Caliber</b>	22462GDB	0.224	62	BTSP	0.31	0.177	100
<b>224 Caliber</b>	22475GDB	0.224	75	BTSP	0.411	0.214	100
<b>264 Caliber</b>	264120GDB	0.264	120	BTSP	0.457	0.246	50
<b>264 Caliber</b>	264140GDB	0.264	140	BTSP-Creedmoor	0.571	0.287	50
<b>277 Caliber</b>	277115GDB	0.277	115	BTSP-6.8 SPC	0.401	0.214	50
<b>277 Caliber</b>	27790GDB	0.277	90	BTSP-6.8 SPC	0.253	0.168	50
<b>308 Caliber</b>	308150BLKGDB	0.308	150	BTSP-300 Blk	0.463	0.226	50
<b>308 Caliber</b>	308150GDB	0.308	150	BTSP	0.503	0.226	50
<b>308 Caliber</b>	308168GDB	0.308	168	BTSP	0.572	0.253	50
<b>310 Caliber</b>	310123GDB	0.310	123	BTSP	0.321	0.183	50

ABBREVIATION KEY: BTSP = Boat Tail Soft Point, SPFN = Soft Point Flat Nose, CANN = Cannelured, SP = Soft Point, SPRN = Soft Point Round Nose

# VARMINT RIFLE BULLETS

When you get a shot at a predator—or a varmint that’s constantly being hunted by them—it’s often just for an instant and at long range. At Speer®, we understand this, so we carefully craft a full line of bullets designed specifically for the needs of predator and varmint hunters. All are pinpoint accurate, consistent and provide terminal performance that puts down targets in their tracks.

## TNT GREEN®

### LETHAL AND LEAD-FREE



Exclusive non-lead bullet technology gives Speer TNT Green an edge over all other options—and all varmints. The bullet uses a thin jacket around a compressed powder core to produce not only long-range accuracy, but also explosive expansion and instant energy release on impact.

## TNT®

### EXPLOSIVE AND ACCURATE



Speer TNT gives predator and varmint hunters what they want most—long-range accuracy and maximum destruction on impact. Its thin precision jacket features internal fluting to ensure complete bullet disruption, while its high ballistic coefficient produces the flattest trajectories possible.

## VARMINT HOLLOW POINT

### VERSATILE AND DEADLY



Whether you’re poppin’ prairie dogs, taking aim at the range or calling ‘yotes, you can count on Speer Varmint Hollow Points to deliver explosive performance and excellent accuracy. Available in a variety of calibers.

## VARMINT SOFT POINT

### ALL-AROUND PERFORMANCE



When you’d prefer controlled expansion over explosive terminal effects, choose Speer Varmint Soft Points. Their Spitzer tip provides both accuracy and superior terminal performance.



#### TNT GREEN® BULLETS

Caliber	Part No.	Diameter	Weight	Bullet Type	BC	SD	Box Count
<b>22 Caliber Hornet</b>	1021	0.224	30	TNT Green	0.091	0.085	100
<b>22 Caliber</b>	1022	0.224	43	TNT Green	0.150	0.122	100
<b>22 Caliber</b>	1028	0.224	50	TNT Green	0.190	0.142	100

#### TNT® BULLETS

Caliber	Part No.	Diameter	Weight	Bullet Type	BC	SD	Box Count
<b>204 Caliber</b>	1015	0.204	39	TNT HP	0.202	0.134	100
<b>22 Caliber</b>	1030	0.224	50	TNT HP	0.228	0.142	100
<b>22 Caliber</b>	4705	0.224	50	TNT HP	0.228	0.142	1000
<b>22 Caliber HV</b>	1032	0.224	55	TNT HP	0.233	0.157	100
<b>6mm</b>	1206	0.243	70	TNT HP	0.279	0.169	100
<b>6mm</b>	4720	0.243	70	TNT HP	0.279	0.169	750
<b>25 Caliber</b>	1246	0.257	87	TNT HP	0.337	0.188	100
<b>25 Caliber</b>	4722	0.257	87	TNT HP	0.337	0.188	750
<b>6.5mm</b>	1445	0.264	90	TNT HP	0.281	0.184	100
<b>270 Caliber</b>	1446	0.277	90	TNT HP	0.303	0.168	100
<b>270 Caliber</b>	4723	0.277	90	TNT HP	0.303	0.168	650
<b>7mm</b>	1616	0.284	110	TNT HP	0.384	0.195	100
<b>30 Caliber</b>	1986	0.308	125	TNT HP	0.341	0.188	100
<b>30 Caliber</b>	4725	0.308	125	TNT HP	0.341	0.188	500

#### VARMINT HOLLOW POINT BULLETS

Caliber	Part No.	Diameter	Weight	Bullet Type	BC	SD	Box Count
<b>22 Caliber</b>	1035*	0.224	52	HP	0.225	0.148	100
<b>22 Caliber</b>	4708	0.224	52	HP	0.225	0.148	1000
<b>6mm</b>	1205	0.243	75	HP	0.192	0.181	100
<b>25 Caliber</b>	1407	0.257	100	HP	0.263	0.216	100
<b>270 Caliber</b>	1447	0.277	100	HP	0.201	0.186	100
<b>30 Caliber</b>	2005	0.308	130	HP	0.244	0.196	100
<b>308 Caliber</b>	1835	0.308	110	HP	0.150	0.167	100

#### VARMINT SOFT POINT BULLETS

Caliber	Part No.	Diameter	Weight	Bullet Type	BC	SD	Box Count
<b>22 Caliber</b>	1017	0.224	40	Spire SP	0.144	0.114	100
<b>22 Caliber</b>	1023	0.224	45	Spitzer SP	0.143	0.128	100
<b>22 Caliber</b>	1024	0.224	46	Bee SPFN	0.087	0.131	100
<b>22 Caliber</b>	1029	0.224	50	Spitzer SP	0.207	0.142	100
<b>22 Caliber</b>	1047	0.224	55	Spitzer SP	0.212	0.157	100
<b>22 Caliber</b>	4711*	0.224	55	Spitzer SP	0.212	0.157	100
<b>22 Caliber</b>	1053	0.224	70	Semi-Spitzer SP	0.219	0.199	100

ABBREVIATION KEY: HP = Hollow Point, HV = High Velocity, SP = Soft Point, SPFN = Soft Point Flat Nose, CANN = Cannelured

\* Available in Value Pack.

# TARGET & PLINKING RIFLE BULLETS

Whether you compete for trophies at the highest levels or just for bragging rights at the range, you need projectiles that are reliable and accurate. Speer's line of rifle target bullets deliver for any need.

## JACKETED HOLLOW POINT

*COST-EFFECTIVE CONSISTENCY*



High-volume shooters need consistent and affordable bullet options. The Speer® Jacketed Hollow Point delivers—without the hefty price tag.

## TARGET MATCH

*EXTENDED-RANGE ACCURACY*



Shooting at extreme range requires a special kind of bullet. Speer Target Match projectiles have what it takes to go the distance—any distance—thanks to a low drag profile, precision jacket and consistent hollow point.

## TMJ®

*CLEAN AND ACCURATE*



Speer TMJ stands in a category all its own. Standard FMJ bullets sacrifice accuracy by adding a separate piece of jacket to cover the bullet base—or leave exposed lead. TMJ rifle bullets totally encapsulate the lead core for cleaner, more accurate performance.



JACKETED HOLLOW POINT RIFLE							
Caliber	Part No.	Diameter	Weight	Bullet Type	BC	SD	Box Count
<b>22 Caliber Hornet</b>	1014	0.224	35	HP	0.080	0.094	100
<b>45 Caliber</b>	2482	0.458	300	HP/CANN	0.206	0.204	50

TARGET MATCH RIFLE							
Caliber	Part No.	Diameter	Weight	Bullet Type	BC	SD	Box Count
<b>22 Caliber</b>	1036	0.224	52	Match BTHP	0.230	0.148	100
<b>30 Caliber</b>	2040	0.308	168	Match BTHP	0.534	0.253	100

TMJ® RIFLE BULLET							
Caliber	Part No.	Diameter	Weight	Bullet Type	BC	SD	Box Count
<b>30 Carbine</b>	1846	0.308	110	TMJ RN	0.179	0.166	100

ABBREVIATION KEY: TMJ = Total Metal Jacket, RN = Round Nose, HP = Hollow Point, BTHP = Boat-Tail Hollow Point, CANN = Cannulure

# HUNTING & PERSONAL PROTECTION HANDGUN BULLETS

Be prepared for a dream hunt or nightmare encounter with Speer's hard-hitting line of handgun bullets designed for hunting and defense. All utilize our electrochemical bonding process and other exclusive technologies so you can trust them to perform whenever called upon.

## DEEPCURL<sup>®</sup> HUNTING

*TOUGHNESS REDEFINED*



Speer<sup>®</sup> electrochemically bonds the DeepCurl jacket to the lead core to create the toughest, most accurate handgun hunting bullet possible. Pre-formed petals expand reliably and consistently and the bullet's high weight retention ensures deep penetration on heavy-bodied game.

## GOLD DOT<sup>®</sup>

*PROVEN BY LAW ENFORCEMENT*



Law enforcement professionals trust Gold Dot for a reason. The bullet's exclusive manufacturing process bonds the uniform jacket to the core one molecule at a time, ensuring proper expansion and nearly 100 percent weight retention. The result is immediate, threat-stopping performance.

To see how Gold Dot bullets are constructed, see pages 4-5.

## GOLD DOT<sup>®</sup> SHORT BARREL<sup>®</sup> PERSONAL PROTECTION

*FULL-SIZE PERFORMANCE*



Speer offers the same bullets used in Gold Dot Short Barrel ammunition as a component for your reloading needs. These bullets are engineered for excellent expansion at velocities common to short-barreled handguns.



#### DEEPCURL® HANDGUN HUNTING

Caliber	Part No.	Diameter	Weight	Bullet Type	BC	SD	Box Count
<b>38 Caliber</b>	4215	0.357	158	DCHP/CANN	0.168	0.177	100
<b>38 Caliber</b>	4230	0.357	170	DCSP	0.185	0.191	100
<b>41 Caliber</b>	4430	0.410	210	DCHP/CANN	0.185	0.191	100
<b>44 Caliber</b>	4455	0.429	240	DCHP/CANN	0.175	0.186	100
<b>44 Caliber</b>	4456	0.429	240	DCSP/CANN	0.175	0.186	100
<b>44 Caliber</b>	4461	0.429	270	DCSP/CANN	0.193	0.210	50
<b>45 Colt</b>	4484	0.452	250	DCHP/CANN	0.165	0.175	50
<b>45 Caliber</b>	3974	0.452	300	DCHP/CANN	0.233	0.210	50
<b>475 Caliber</b>	3973	0.475	275	DCHP/CANN	0.162	0.174	50
<b>475 Caliber</b>	3978	0.475	325	DCSP/CANN	0.191	0.206	50
<b>50 Action Express</b>	4493	0.500	300	DCHP	0.155	0.171	50
<b>500 S&amp;W</b>	4491	0.500	350	DCSP/CANN	0.178	0.200	50

ABBREVIATION KEY: DCHP = DeepCurl Hollow Point, DCSP = DeepCurl Soft Point, CANN = Cannulure

DeepCurl's unique construction process joins the jacket to the core at the molecular level for excellent performance and consistency. For this reason, conventional reloading data developed for standard jacketed bullets should not be used to load DeepCurl bullets. Only DeepCurl-specific reloading data or Gold Dot bullet data for the same part number released by Speer Bullets should be used. It can be obtained by contacting Speer Bullets Technical Services at 800-379-1732.

#### GOLD DOT® PERSONAL PROTECTION

Caliber	Part No.	Diameter	Weight	Bullet Type	BC	SD	Box Count
<b>25 Caliber</b>	3985	0.251	35	GDHP	0.091	0.079	100
<b>327 Federal®</b>	3990	0.312	100	GDHP	0.150	0.147	100
<b>380 Auto</b>	3992	0.355	90	GDHP	0.101	0.102	100
<b>9mm</b>	3994	0.355	115	GDHP	0.125	0.130	100
<b>9mm</b>	3998	0.355	124	GDHP	0.134	0.141	100
<b>9mm</b>	4002	0.355	147	GDHP	0.164	0.167	100
<b>357 Sig</b>	4360	0.355	125	GDHP	0.141	0.142	100
<b>357 Magnum</b>	4012	0.357	125	GDHP/CANN	0.140	0.140	100
<b>40 Caliber/10mm</b>	4400	0.400	155	GDHP	0.123	0.138	100
<b>40 Caliber/10mm</b>	4397	0.400	165	GDHP	0.138	0.147	100
<b>40 Caliber/10mm</b>	4406	0.400	180	GDHP	0.143	0.161	100
<b>44 Special</b>	4427	0.429	200	GDHP/CANN	0.145	0.155	100
<b>44 Magnum</b>	4428	0.429	210	GDHP/CANN	0.154	0.163	100
<b>45 Auto</b>	4470	0.451	185	GDHP	0.109	0.130	100
<b>45 Auto</b>	4478	0.451	200	GDHP	0.138	0.140	100
<b>45 Auto</b>	4483	0.451	230	GDHP	0.143	0.162	100

#### GOLD DOT® SHORT BARREL® PERSONAL PROTECTION

Caliber	Part No.	Diameter	Weight	Bullet Type	BC	SD	Box Count
<b>38 Special</b>	4009	0.357	110	GDHP SB/CANN	0.117	0.123	100
<b>38 Caliber</b>	4014	0.357	135	GDHP SB/CANN	0.141	0.151	100
<b>45 Caliber</b>	4482	0.451	230	GDHP SB	0.148	0.162	100

ABBREVIATION KEY: GDHP = Gold Dot Hollow Point, GDHP SB = Gold Dot Hollow Point Short Barrel, CANN = Cannulure

# TARGET & ACTION HANDGUN BULLETS

You expect peak performance in all other forms of shooting—insist on it at the range as well with Speer's complete line of handgun bullets. Our target and action pistol projectiles are built with our most exclusive technologies to perform to the highest standards.

## TMJ®

### CLEAN CONSISTENCY



Speer® uses Uni-Cor® technology to take full metal jacket bullets to their highest level of evolution with the Total Metal Jacket. Other FMJ bullets have an accuracy-robbing second piece to cover the lead, or have lead exposed at the base, which can deform under pressure. TMJ's seamless jacket means this can't happen. Airborne lead goes down, and TMJs won't foul ported recoil compensators like open-base bullets do. We swage each bullet twice, ensuring consistent diameters and a uniform heel. TMJ bullets are great for action pistol competition.

## JACKETED

### READY FOR ACTION



Jacketed Handgun Bullets with Uni-Cor® technology boast a perfectly uniform jacket and are great options for action and competitive shooting. They are available in calibers from 32 to 50.

## LEAD HANDGUN

### MODERN CLASSIC



Speer cold-formed lead bullets are even better than ever with a technologically advanced, multi-layer lube. The coating won't burn off, virtually eliminating leading problems and ensuring cleaner, more accurate shooting. It also won't melt off in storage or transport and is dry to the touch.

Available in calibers from 32 through 45, exclusively in bulk packs.



#### TMJ® HANDGUN BULLETS

Caliber	Part No.	Diameter	Weight	Bullet Type	BC	SD	Box Count
9mm	4001	0.355	95	TMJ RN	0.131	0.108	100
9mm	3995	0.355	115	TMJ RN	0.151	0.130	100
9mm	3993	0.355	124	TMJ RN	0.159	0.141	100
9mm	4726	0.355	124	TMJ RN	0.159	0.141	600
9mm	4006	0.355	147	TMJ FN	0.188	0.167	100
357 Sig	4362	0.355	125	TMJ FN	0.147	0.142	100
357 Sig	4731	0.355	125	TMJ FN	0.147	0.142	600
38 Caliber	4015	0.357	125	TMJ FN/CANN	0.146	0.140	100
38 Caliber	4207	0.357	158	TMJ FN/CANN	0.173	0.177	100
9mm Makarov	4375	0.364	95	TMJ RN	0.127	0.102	100
40 Caliber/10mm	4399	0.400	155	TMJ FN	0.125	0.138	100
40 Caliber/10mm	4410	0.400	165	TMJ FN	0.135	0.147	100
40 Caliber/10mm	4402	0.400	180	TMJ FN	0.143	0.161	100
40 Caliber/10mm	4734	0.400	180	TMJ FN	0.143	0.161	400
45 Caliber	4473	0.451	185	TMJ SWC	0.094	0.130	100
45 Caliber	4476	0.451	185	TMJ FN	0.094	0.130	100
45 Caliber	4475	0.451	200	TMJ SWC	0.128	0.140	100
45 Caliber	4480	0.451	230	TMJ RN	0.153	0.162	100
45 Caliber	4750	0.451	230	TMJ RN	0.153	0.162	300
50 Action Express	4490	0.500	300	TMJ FN	0.157	0.171	50

#### JACKETED HANDGUN BULLETS

Caliber	Part No.	Diameter	Weight	Bullet Type	BC	SD	Box Count
38 Caliber	4007	0.357	110	JHP/CANN	0.113	0.123	100
38 Caliber	4013	0.357	125	JHP/CANN	0.129	0.140	100
38 Caliber	4211	0.357	158	JHP/CANN	0.163	0.177	100
38 Caliber	4732	0.357	158	JHP/CANN	0.163	0.177	450
38 Caliber	4217	0.357	158	JSP/CANN	0.164	0.177	100
44 Caliber	4454	0.429	240	JSP/CANN	0.169	0.186	100
45 Caliber	4481	0.452	260	JHP/CANN	0.183	0.183	50
45 Caliber	4485	0.451	300	JSP/CANN	0.199	0.211	50
50 Action Express	4495	0.500	325	JHP	0.169	0.186	50

#### LEAD HANDGUN BULLETS

Caliber	Part No.	Diameter	Weight	Bullet Type	BC	SD	Box Count
32 S&W Long	4600	0.314	98	Hollow Base WC	0.044	0.142	1000
9mm	4602	0.356	125	RN	0.155	0.141	500
38 Caliber	4618	0.358	148	Hollow Base WC	0.050	0.165	500
38 Caliber	4624	0.358	158	SWC	0.123	0.176	500
38 Caliber	4628	0.358	158	SWC HP	0.121	0.176	500
38 Caliber	4648	0.358	158	RN	0.170	0.176	500
44 Caliber	4661	0.430	240	SWC	0.170	0.176	500
45 Auto	4678	0.452	200	SWC	0.170	0.176	500
45 Auto	4691	0.452	230	RN	0.160	0.161	500
45 Colt	4684	0.452	250	SWC	0.117	0.175	500

ABBREVIATION KEY: TMJ = Total Metal Jacket, RN = Round Nose, FN = Flat Nose, SWC = Semi-Wadcutter, JHP = Jacketed Hollow Point, JSP = Jacketed Soft Point, WC = Wadcutter, HP = Hollow Point, CANN = Caninure

\* Available in Value Pack

# SPECIALTY AND ACCESSORIES

Shooters' needs are as varied as shooters themselves. At Speer®, we recognize this with specialty products that fulfill these unique facets of shooting, and our Handloading Manual serves as the ultimate resource for handloading recipes and information.

## PLASTIC TRAINING BULLETS & CASES

### PRACTICAL PRACTICE



For informal target practice in places with a minimum backstop, finding the proper ammo isn't always easy. Speer Plastic Training Bullets & Cases make the perfect practice load. Reusable molded plastic cases and bullets powered by CCI® large pistol primers provide an accurate and inexpensive alternative. They are designed for 25-foot shooting.

Simply prime the case, insert the plastic wadcutter bullet and you're ready to go. Primer power alone propels the lightweight bullet 300-400 fps. You can stop these in a simple bullet trap made from carpet scraps and cardboard. Bullets can be reused several times.

Bullets and cases are sold separately, so you can replace lost or damaged bullets. They are packed 50 bullets or cases to the box. The 45 Auto bullet is designed to readily load in a standard reloadable brass case with a modified flash hole.

This is not loaded ammunition. Primers are not included. Recommended for handguns only. Use only in areas with adequate ventilation. Do not use any propellant powder when assembling these cartridges.

#### PLASTIC BULLETS & CASES

Product	Bullet Part #	Case Part #	Box Count
<b>38 Cal</b>	8510	8515	50
<b>44 Cal</b>	8520	8525	50
<b>45 Cal*</b>	8530	See Notes	50

Note: 45 cal. bullet is used with standard brass case. \* For 45 Auto only.

## EMPTY SHOT CAPSULES

### PEST LOADS FOR PISTOLS



Create custom shot cartridges with a different shot size or velocities with our Empty Shot Capsules. Simply fill them with size 8 or 9 shot (not included), snap in the base wad, and load like a conventional bullet. Shot Capsules include base wads and are available in 44 caliber and 45 Colt (25 count), and 38/357 (50 count). Loading data is available in the Speer Handloading Manual.

Intended for short-range pest and varmint control. Not recommended for self-defense. Not for use in firearms with ported recoil compensators.

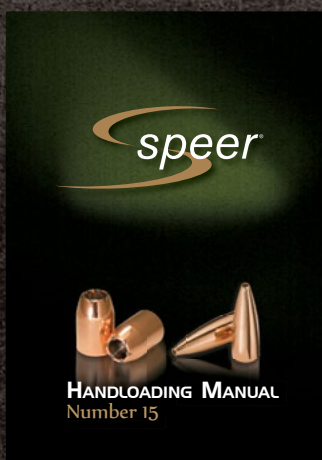
#### EMPTY SHOT CAPSULES

Product	Part #	Box Count
<b>38/357 Cal.</b>	8780	50
<b>44 Cal</b>	8782	25
<b>45 Colt</b>	8785	25



## SPEER® HANDLOADING MANUAL #15

### YOUR GUIDE TO PERFECT HANDLOADS



The heralded Speer Handloading Manual represents years of fine-tuning loads and meticulous testing. This new edition (Manual #15) is our largest volume yet. In an age of automation and mass production, handloaders relish the satisfaction that comes only to those who create. Whether you're a veteran or just getting started, let the Speer Handloading Manual #15 be your guide as you create the perfect load for that special firearm, hunt or target set. Handloaders can also visit [speer-ammo.com](http://speer-ammo.com) for the very latest data.

Part # SRM15 — Handloading Manual

## LEAD ROUND BALLS

### TRADITION MEETS PRECISION



Speer offers a variety of lead balls for the traditional shooting enthusiast. Great care is taken to ensure smoothness and shape uniformity for better accuracy. Lead balls are packaged in our unique black plastic boxes for added protection and convenience.

LEAD ROUND BALLS			
Ball Diameter (inches)	Part #	Approximate Weight (Grains)*	Box Count
0.350	5110	64	100
0.375	5113	79	100
0.433	5127	121	100
0.440	5129	127	100
0.445	5131	132	100
0.451	5133	137	100
0.454	5135	140	100
0.457	5137	143	100
0.490	5139	176	100
0.495	5140	181	100
0.530	5142	223	100
0.535	5150	229	100
0.570	5180	277	50

Use the ball diameter recommended by your firearm's manufacturer. \*Round balls are manufactured to diameter; weights are provided for reference only.



speer-ammo.com  
© 2017 Speer

